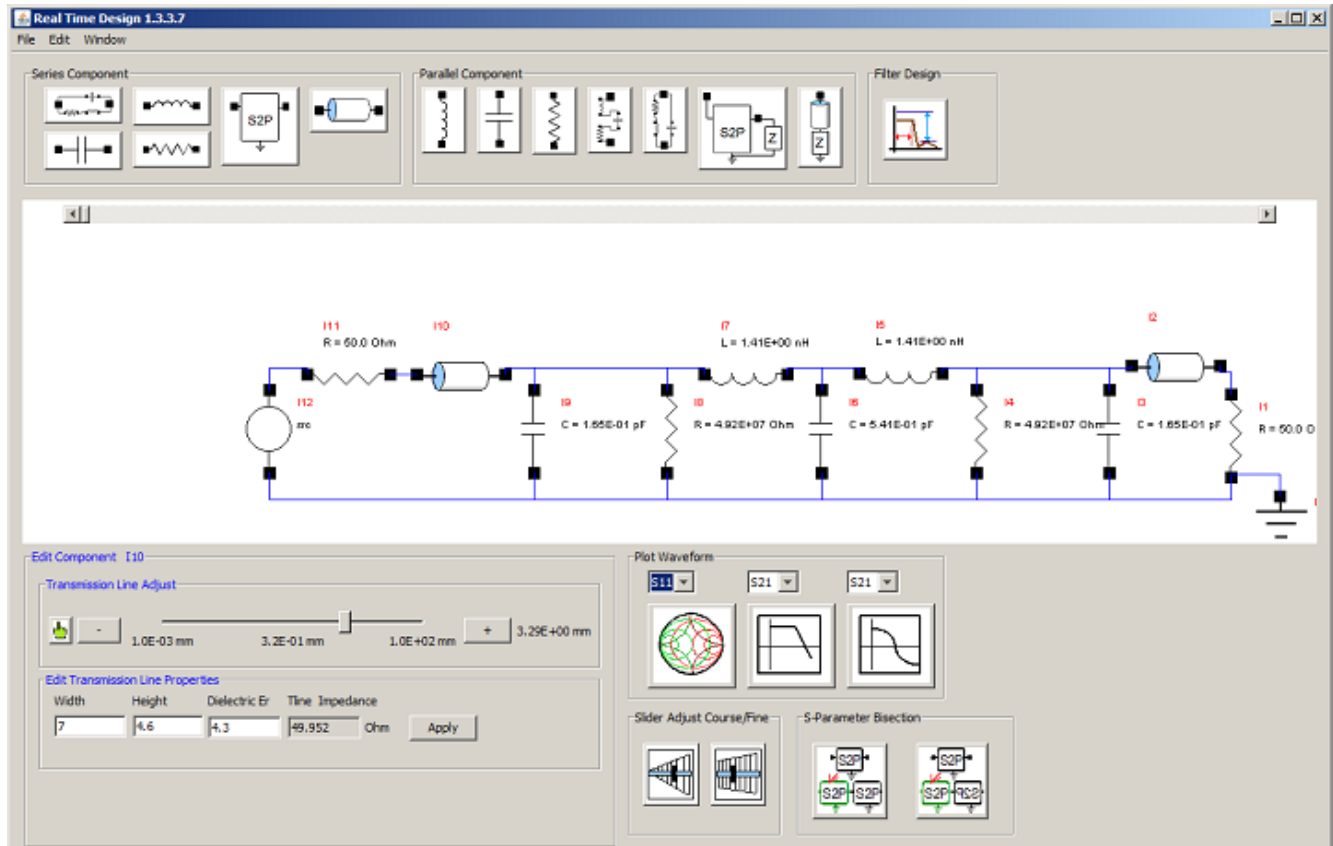
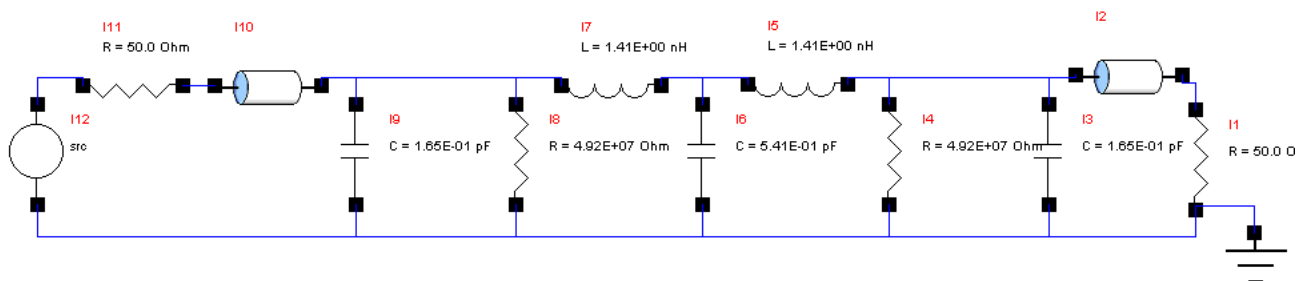


S2P Bisection of Symmetrical Circuit

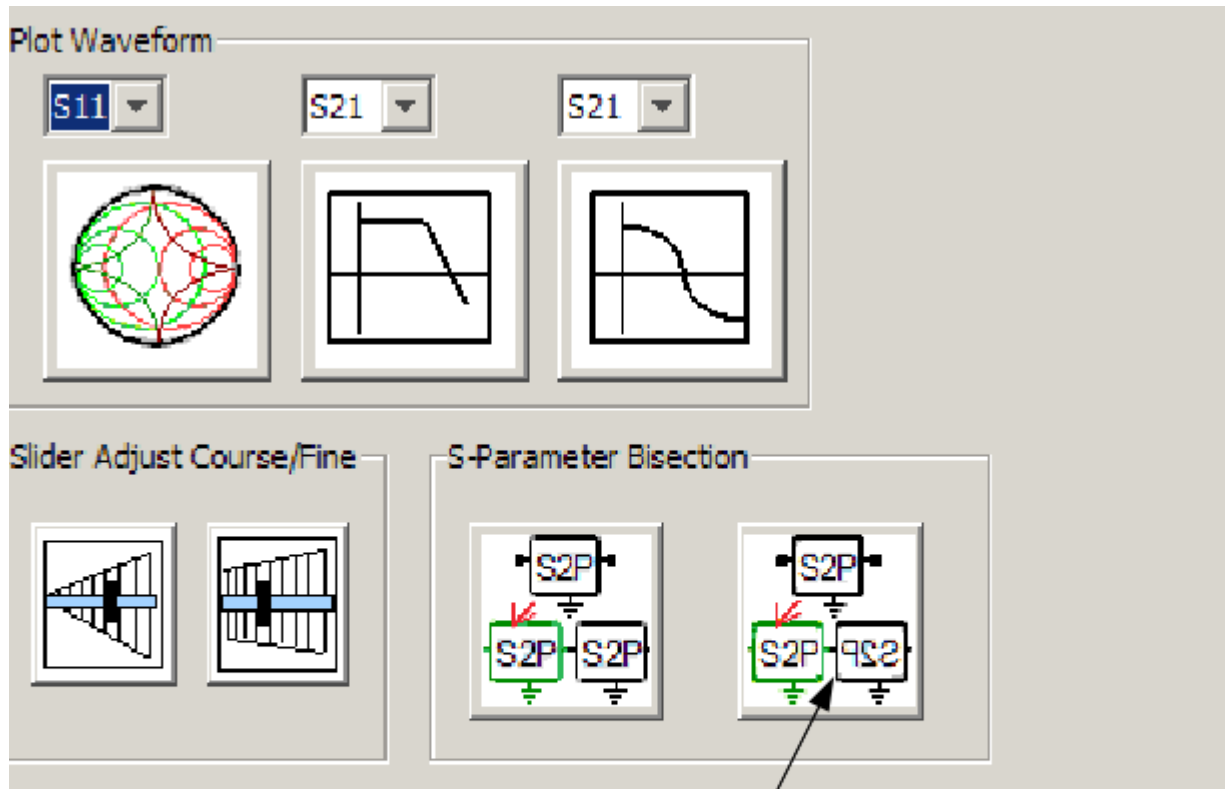
Consider the schematic representation of a first connector, trace, and second connector below



Goal is to make to equal circuits mirrored about the access of symmetry

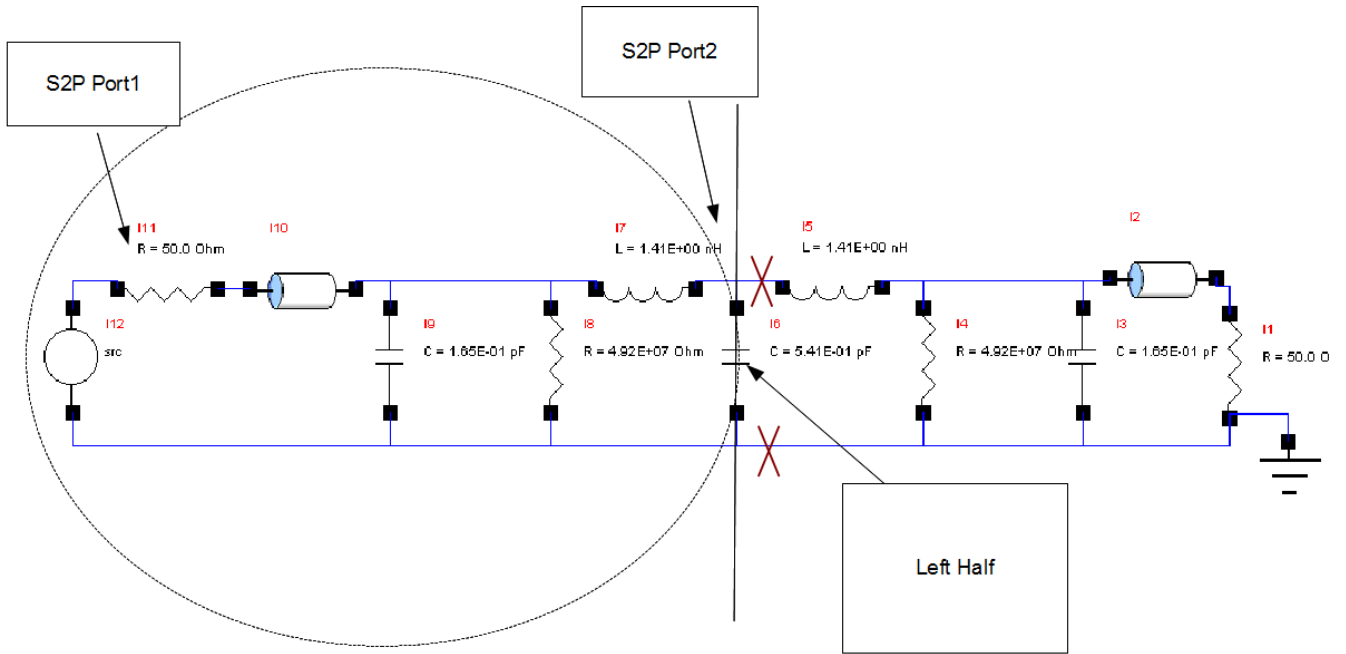


Press the symmetrical s-parameter bisection button

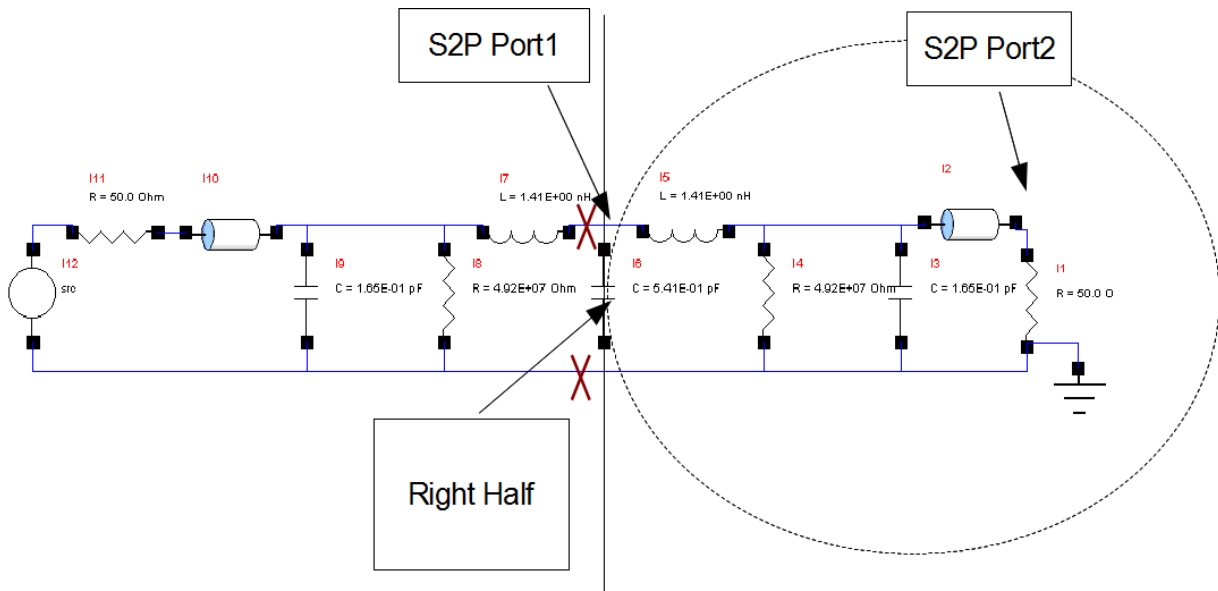


Symmetrical
Bi-section

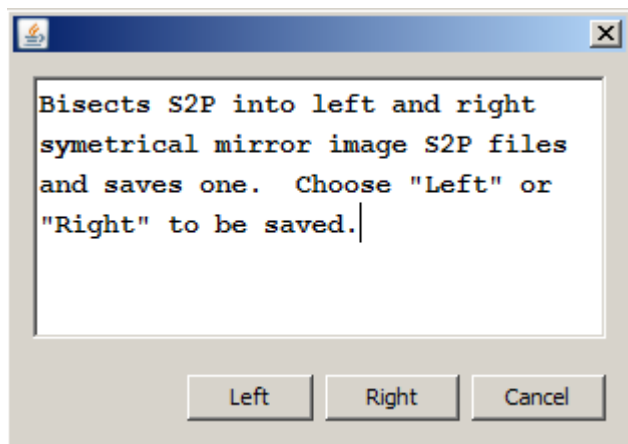
Left half bisection



Right half bisection



Choose “Left” or “Right”



NOTE:

if $S_{11} \neq S_{22}$ for most entries resulting split may not be correct, Use the asymmetrical equal split as an alternative. The resulting S2P file might be truncated significantly.

Save the s2p file for example “left.s2p” and the bi sectioning is complete.

Finally, this procedure can be performed on loaded s2p files in addition to schematic representation.